



Co-funded by the
European Union



Summer School

Join us in Thessaloniki, Greece!
June 30th - July 4th 2025



CERTH/HIT
Hellenic Institute
of Transport



About us



Who we are



CERTH/HIT is a well-recognized research and technology body producing state of the art research, and innovative solutions and services to support policy and decision making in the field of transport and logistics. It has considerable experience in cultivating entrepreneurial mindset in the field of its expertise, through spin-offs that offer innovative solutions in urban mobility problems, as well as challenges and ideas contests.



AUTH/LASCUM aims to the development of high-level scientific knowledge focusing on the thematic areas of Logistics and Supply Chain Management, as well as their distribution in society for fostering national economies and sustainable development. The laboratory's philosophy focuses on providing practical solutions for the Logistics and Supply Chain Management fields, necessitating a holistic approach and collaboration across multiple scientific disciplines to move beyond isolated academic and business practices.





CityMinds @ a glance



CityMinds Summer School, is a five-day training programme designed for undergraduate students from RIS countries* to cultivate the **entrepreneurial mindset** and **innovative thinking** in **Smart Urban Mobility & City Logistics**



It elaborates on a mix of **innovative learning methods** that create a holistic knowledge approach, **‘from concept to market’**

**EIT Regional Innovation Scheme (RIS) is an initiative to enhance innovation capacities of countries with moderate and emerging levels of innovation, according to the European Innovation Scoreboard*

What does the Summer School offers?



- > Use of Innovative Learning Methods
- > Academic & industrial experts lecturing
- > Site visits in state-of-the-art facilities
- > Deal with real Urban Mobility & City Logistics Challenges

Benefits & Opportunities



- > Cultivate an entrepreneurial mindset & innovation thinking
- > Develop solutions ‘form concept to market’

- > Networking opportunities across the EU
- > Accelerate professional/business opportunities



Participation fees



The program will be fully funded for the top 35 BSc students from RIS countries

> Fully funded for eligible students!

- Cost of travelling to Greece*
- 5/day accommodation
- Coffee and lunch (daily)
- Educational material at no cost

> Non-eligible participants:

- Participation cost €300
- Includes course materials, live sessions, workshops, coffee meals, and social activities
- Travelling and accommodation is not included

*travel costs of up to €500 (approximately) reimbursed



Course & lectures



◆ 4 modules

◆ 14 theoretical lectures

◆ 3 Site visits

◆ Group projects



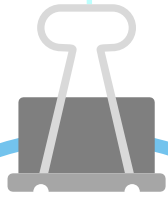
◆ 3 Workshops

◆ 1 pitching event

◆ Prizes >€3,000

◆ Certifications

Course components



Verticals

Smart Urban Mobility

City Logistics

Data Governance



Methods

Lectures

Site visits

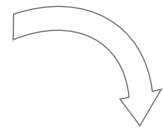
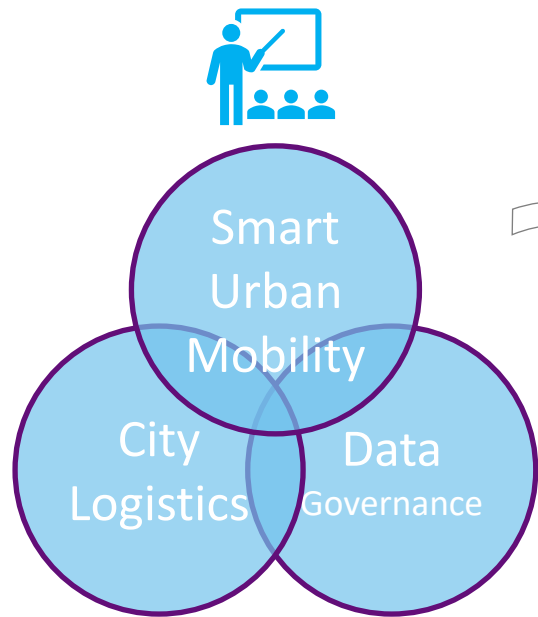
Workshops



Horizontals

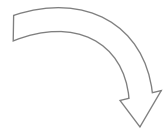
Design Thinking
for Innovation

Entrepreneurship
mindset



Site Visits

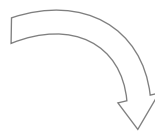
Challenges



Workshops

Design Thinking

Entrepreneurship



Solutions (projects)

Course process

- ✓ EIT Urban Mobility initiatives
- ✓ Fundamentals of City Logistics
 - ✓ Emerging technologies in Digital SCs
 - ✓ Liveable cities and urban mobility challenges

Smart Urban Mobility & City Logistics Transition

Innovation fundamentals and acceleration pathways

- ✓ Accelerating Innovation
- ✓ Urban Mobility Innovation
- ✓ Sustainability and urban mobility
- ✓ Real-world experience

**4
MODULES**

Living Labs and Data Governance

Fostering the entrepreneurship mindset in smart urban mobility & City Logistics

- ✓ Design thinking and ideation
- ✓ Role of emerging technologies in creating entrepreneurial opportunities
- ✓ Funding and financial planning
- ✓ Successful business models in smart urban mobility

- ✓ Living Labs supporting twin transition
 - ✓ Living lab collaborative governance & real-world validation
 - ✓ City mobility challenges

Timetable (draft)



30/6 - 4/7



9:00 – 17:00

Monday	Tuesday	Wednesday	Thursday	Friday
DAY 1	DAY 2	DAY 3	DAY 4	(OPEN) DAY 5
Welcome session	3 lectures (Modules 2, 3)	3 lectures (Modules 2, 3, 4)	4 lectures (Modules 2, 3, 4)	summary
4 lectures (Modules 1, 4)	1 site visit	1 site visit	1 site visit (optional)	pitching event
1 site visit	1 workshop	1 workshop	1 workshop	farewell event





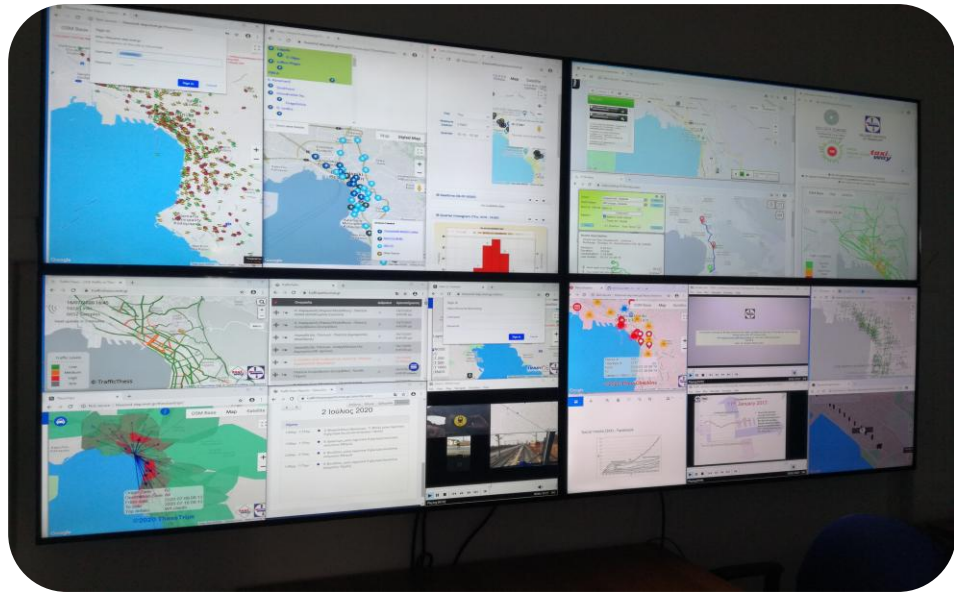
Site visits



- > The **site visits** aim to integrate **theory** with **real-life challenges** and identify the issues and cases to be addressed by the summer school students' group projects

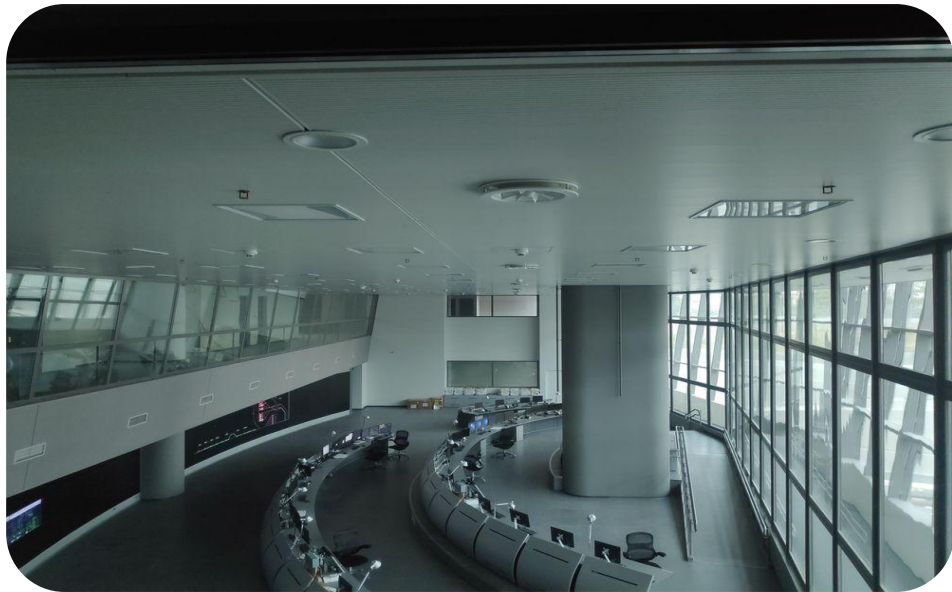


Site Visits (TbD)



- > **Thessaloniki Living Lab** is crucial in this process, facilitating the involvement of citizens and end users in real-life situations, to give practical value in innovation

Site Visits (TbD)



- > The **Thessaloniki Metro Operation Control Center** is the “heart” and “mind” of the System and the Network
- > It is where all Metro operations are monitored and controlled in real-time, ensuring the safe and reliable execution of routes and passenger service

Site Visits (TbD)



- > Distribution Centers for City Logistics services
- > Store, sort, plan and monitor last-mile deliveries

- > Explore city logistics start-ups





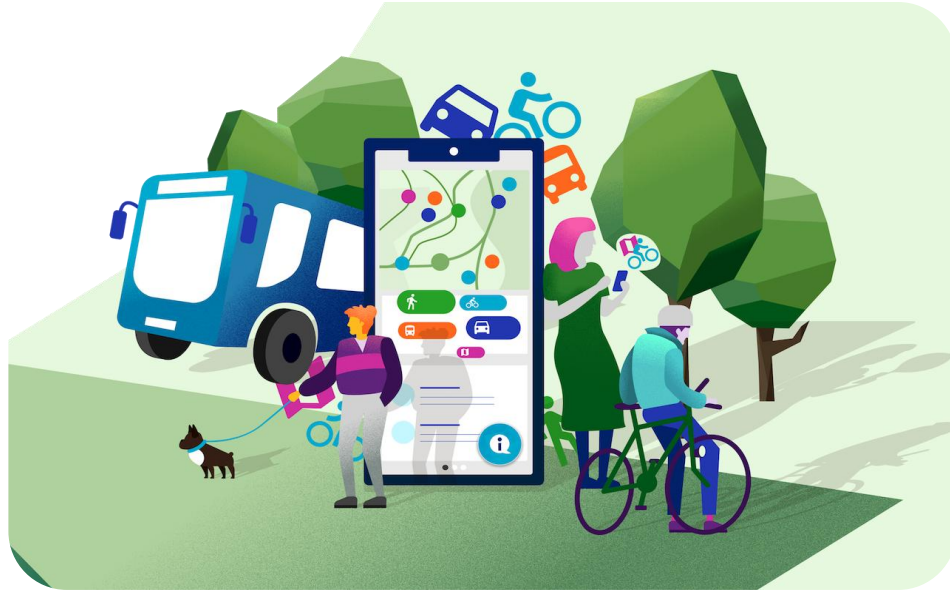
Challenges



- > Theoretical knowledge is constantly validated and refined against practical challenges. This dynamic interplay between theory and practice is a unique offering that complements existing market solutions
- > CityMinds challenges will be selected based on the principle of the highest applicability potential in Thessaloniki and the highest replicability potential across European cities



Challenges examples



Safe pedestrian space

- > Key elements include wide pavements, quality lighting, speed limits in pedestrian zones, safety barriers, green spaces and inclusive design

Nudging travel behavior

- > subtle changes in the choice architecture that can influence decisions without imposing restrictions or economic incentives



Challenges examples



Clear air zones

- > Defined areas where certain types of vehicles are required to comply with emissions standards

Microhubs

- > small, strategically placed logistics spaces are designed to streamline deliveries, cut emissions, and make urban transport more efficient



Apply



Eligibility Criteria

- Applications are open to **students** from **RIS countries*** who have completed at least their second year of an undergraduate degree in fields such as engineering, information science, information technology, computer science, computer engineering, statistics, geoinformation technology, urban planning, geography, economics, or software engineering.
- **Master's students** or young **professionals** are eligible to apply as paid participants!

**RIS countries:*

- **EU Member States:** Bulgaria, Croatia, Czechia, Estonia, Greece, Spain, Italy, Cyprus, Latvia, Lithuania, Hungary, Malta, Poland, Portugal, Romania, Slovenia, Slovakia
- **Horizon Europe Associated Countries:** Montenegro, North Macedonia, Serbia, Türkiye, Ukraine
- **Outermost Regions:** Guadeloupe, French Guiana, Réunion, Martinique, Mayotte and Saint-Martin (France), the Azores and Madeira (Portugal), and the Canary Islands (Spain)

Selection process

How to  APPLY



- > **Step 1: Fill in the registration form** (open)
- > **Step 2: Get information regarding next steps** (e-mail)
- > **Step 3: Complete the registration process** (open)
 - Send back short CV, motivation letter and the answer to a quiz
- > **Step 4: The selected applicants send an essay** (app. 300 words) on Urban Mobility challenges (by 30/4)
- > **Step 5: Evaluation of applications** (by 10/5)
 - Eligibility criteria, profile, essay
- > **Step 6: Congratulations! You are selected!**
 - Notification of qualified participants (by 15/5)
 - Confirm participation (31/5 the latest)





CityMinds

Summer School

Boost Innovation thinking & Entrepreneurial skills in Smart Urban Mobility

Join us in Thessaloniki,
Greece!

June 30th – July 4th 2025

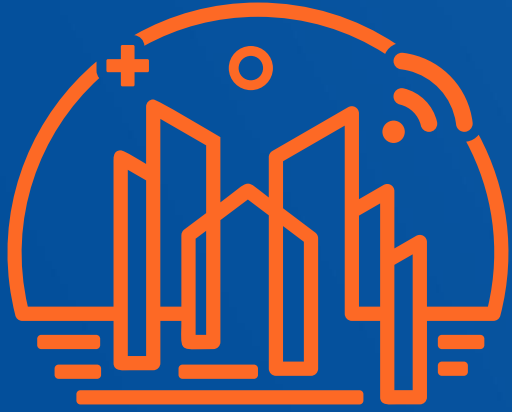
Terms of Participation

- > Good knowledge of English
- > On-site participation

but most of all...

- > **Curiosity and energy!!!**









CityMinds

Connect with us

For more information

-  @EIT Urban Mobility
-  @EIT Urban Mobility
-  @EIT UrbanMob
-  @EIT Urban Mobility
-  @EIT UrbanMob

-  @CityMinds Summer School
-  @CityMinds Summer School

 cityminds@certh.gr

cityminds.eu

eiturbanmobility.eu